



Toshiba's e-BRIDGE™ Accounts uses the existing Department Code ID system to greatly expanding the capability of your Toshiba e-STUDIO Multifunction Device (MFD).

Track usage Manage costs Reduce wastage

Need to submit regular office reports? Want to allocate costs or find out who is using office resources?

e-BRIDGE Accounts is a simple yet effective software application allowing you to monitor usage and manage costs of your e-STUDIO MFD Fleet.

e-BRIDGE Accounts features:

- > Department/User code accounting system using a simple 5 digit schema
- > Consolidated Reporting over multiple Toshiba devices
- > Detailed usage and cost reports by User, Department and MFD's
- > Tabular and Graphical reports can be exported to both CSV or PDF
- > Simple and intuitive user interface with easy to use wizards
- > Developed in Java for Multi-Platform Support
- > User friendly MFD Interface and Printing Pop Up Window

Software Solution

TOSHIBA
Leading Innovation >>>



e-BRIDGE Accounts

Whether you have a fleet of one or 50 e-STUDIO MFD's, e-BRIDGE™ Accounts will help your organisation reduce expenses and limit wasteful device usage.

It really couldn't be easier. e-BRIDGE Accounts consolidates user data from multiple e-STUDIO devices then using built-in wizard templates generates detailed reports of usage and costs by user, department and device.

Gather usage by paper size (A4/A3), colour/monochrome, and by copy/print/scan functions; then compare user activity historically by department or MFD for redirection of costs.

Reports are displayed in tabular or graphical views and can be exported to CSV for inclusion into MS Office or saved as a PDF.

e-BRIDGE Accounts is ideal for:

- > Education — Identify and log usage by department or class then manage costs and resources accordingly
- > Government — Reduce your carbon footprint by maximising usage of paper resources and highlight wastage hotspots
- > Corporate — Reporting on both Colour and Monochrome usage for copy, print and scanning provides seamless cost control of employee usage and a deterrent for misuse of company resources.
- > General Offices - Gaining greater control over device usage will quickly reduce wastage of both paper and toner

Pre-requisites

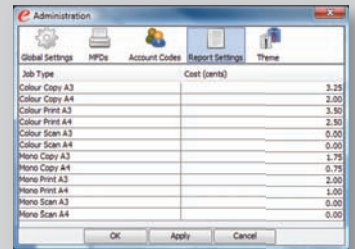
- > **Toshiba Multifunction Device** (with Department Codes Enabled).
e-STUDIO MFD with print option (if not standard) utilising e-BRIDGEII/III/X architecture
e-BRIDGE Accounts requires Java Runtime Environment 1.6.0_04 installed on the host PC.

System Requirements	
Display Resolution	1,024 x 768 dots or more
Display Color	High color (16 bit) or higher is recommended
CPU	Pentium 266 MHz minimum or faster recommended
Memory	128 megabytes (MB) of RAM or higher recommended
Operating System	Windows XP Professional with Service Pack 1/2/3 (32bit) Windows Vista Business (32bit) Windows 7 Professional (32/64bit)

AUTHORISED TOSHIBA DEALER

Toshiba (AUSTRALIA) Pty Limited
Australian Head Office
 Building C, 12-24 Talavera Road, North Ryde.
 NSW, Australia
 Tel: (02) 9887 6000 Fax: (02) 9815 6274
New Zealand Head Office
 58 Lunn Avenue, Auckland, North Island.
 New Zealand
 Tel: (9) 570 8530 Fax: (9) 570 8930

www.eid.toshiba.com.au
www.eid.toshiba.co.nz



Allocate page costs and report settings



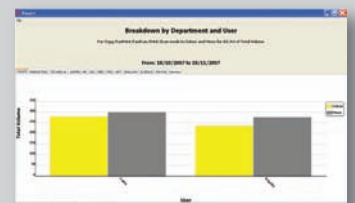
Generate Graphical reports



Export as PDF or Excel (CSV)

Historical reporting by department

Activity report by MFD



Breakdown by Department and User

TOSHIBA
 Leading Innovation >>>