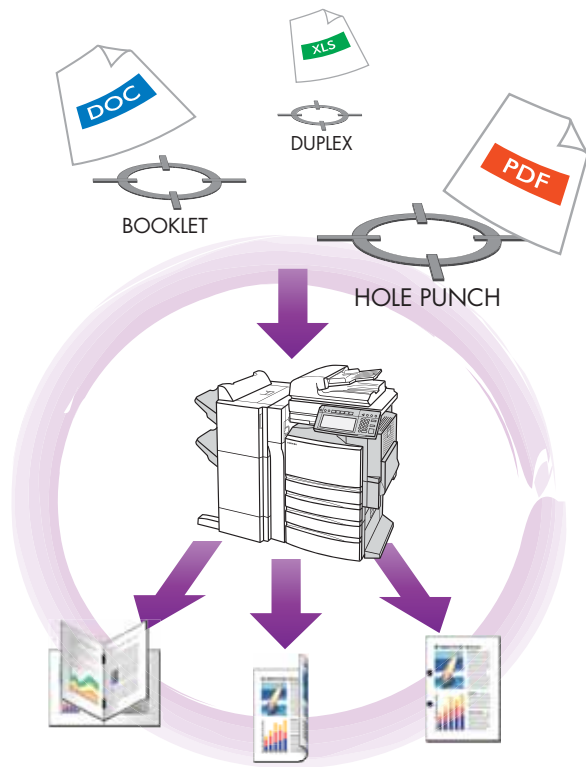


# e



## e-BRIDGE Drop Zone



*Toshiba's e-BRIDGE™ Drop Zone takes the pain out of repetitive print tasks.*

Contact **Toshiba** on **1300 794 202** or [www.eid.toshiba.com.au](http://www.eid.toshiba.com.au) for more information

Microsoft, Windows® Vista, and Windows® NT are registered trademarks of Microsoft Corporation in the United States and/or other countries. Adobe® PostScript® Level 3™ is a registered trademark of Adobe Systems, Inc. All other brand and/or product names are trademarks of their respective owners.

Design and specifications subject to change without notice.  
©2009 TOSHIBA TEC CORPORATION All rights reserved.

## Time saving Easy to use Set and forget

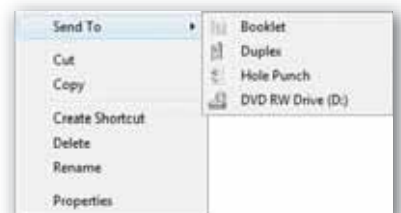
Are you forever having to configure specific print settings for different documents and reports.

Toshiba's e-BRIDGE Drop Zone improves productivity by simplifying the printing of office files into a select, drag, and drop process.

Once users create Drop Zones with different printing and finishing parameters, files are printed without manually opening an application or driver menu.

Simply drag and drop or right-click and send the required file onto the handy desktop icon then let Drop Zone do the rest.

- > Supports MS Word, Excel, PowerPoint, PDF & more
- > Drag and drop or select from right-click menu



Pre-Requisites include a Toshiba e-STUDIO Multi-Function Device (MFD) with e-BRIDGE postscript (PS3) print driver.

### System Requirements

<b>Display Resolution</b>	1,024 x 768 dots or more
<b>Display Color</b>	High color (16 bit) or higher is recommended
<b>CPU</b>	Pentium 266 MHz minimum or faster recommended
<b>Memory</b>	128 megabytes (MB) of RAM or higher recommended
<b>Operating System</b>	Windows XP SP1 or later, or Windows Vista 32bit